

Phone: 01964 533343

Email: info@hpsestateagents.co.uk

HPS
ESTATE AGENTS



Chapel Garth Skipsea, YO25 8TB

Nestled in the charming village of Skipsea, this delightful semi-detached bungalow on Chapel Garth offers a perfect blend of comfort and convenience. With two well-proportioned bedrooms and a spacious reception room, this true bungalow is ideal for those seeking a peaceful retreat close to the coast.

The property boasts a well-designed layout, featuring a bright conservatory that invites natural light and provides a lovely space to relax or entertain. The low-maintenance gardens surrounding the bungalow ensure that you can enjoy the outdoors without the burden of extensive upkeep, making it perfect for busy individuals or those looking to downsize.

Parking is a breeze with space for up to four vehicles, complemented by a garage for additional storage or secure parking. The location is particularly appealing, as it is situated in a lovely village setting, offering a sense of community while still being just a short distance from the beautiful coastline.

This bungalow presents an excellent opportunity for anyone looking to embrace a tranquil lifestyle in a picturesque area. Whether you are a first-time buyer, a retiree, or simply seeking a serene getaway, this property is sure to meet your needs. Don't miss the chance to make this charming bungalow your new home.

Viewing is highly recommended to appreciate all this delightful home has to offer.

EPC-Awaiting- Council Tax- A- Tenure- Freehold

£174,950

www.hpsestateagents.co.uk

Entrance Hall

12'2" x 2'10" (3.72 x 0.87)

The double-glazed entrance door opens into an L-shaped entrance hall which has a side window, a radiator and wooden flooring. There is access to the loft and the consumer box is located in the hall.

Living Room

13'4" x 10'1" (4.08 x 3.09)

Beautiful pine double doors lead from the entrance hall into the alcove of the living room which has a double-glazed window to the front and wooden flooring throughout. It features ceiling coving, wall light points and an attractive hearth and surround with a coal effect electric fire.

Conservatory

8'7" x 7'6" (2.64 x 2.30)

The conservatory has windows to the side and rear, with patio doors leading to the back garden. Wooden flooring adds charm to this room.

Kitchen

7'10" x 9'6" (2.40 x 2.92)

The bright kitchen contains fitted wall and base units, laminate work surfaces, a ceramic sink unit and drainer with a mixer tap, electric oven and hob with an extractor hood and space for a washing machine. The walls are part tiled, the ceiling is coved and the floor covering is attractive laminate tiling. The window is at the front of the house and door to the hall. The oil boiler is also located in this room under the work surface .

Bedroom 1

11'7" x 11'9" (3.55 x 3.60)

This lovely bedroom is situated at the rear of the bungalow and is accessed through a pine door. It features a radiator, wooden flooring and patio doors that lead into the conservatory.

Bedroom 2

8'11" x 8'7" (2.73 x 2.64)

Bedroom looks out onto the rear of the property. It has a pine door leading from the entrance hall and wooden flooring.

Bathroom

6'3" x 4'10" (1.93 x 1.49)

The stylish bathroom comprises a vanity unit with the hand basin and low level w.c. a step in shower cubicle and a large heated towel rail. The walls are covered with shower board, the flooring is laminate and there is an extractor fan. The window is to the side of the property.

Front Garden

The front garden is slate-gavelled with a paved driveway. There is an outside tap and the boundaries are fenced plus brick wall between the adjoining bungalow.

Rear Garden

The rear garden is mainly paved with fenced boundaries and a gate accessing the lane. Views of open fields from the rear garden

Garage

The stone pebble garage is detached. It has an up and over door, a window to the side and power points within.

Drive

Pavers creating a drive leading to the side of the bungalow. Concreted area leading to the garage. Picket fence and gate providing privacy. Parking for several cars.

Property Details

Heating- Oil fired central heating

Drainage- Mains drainage

EPC- Awaiting

Council Tax Band- A

Tenure- Freehold

Disclaimer

Laser Tape Clause - Laser Tape Clause

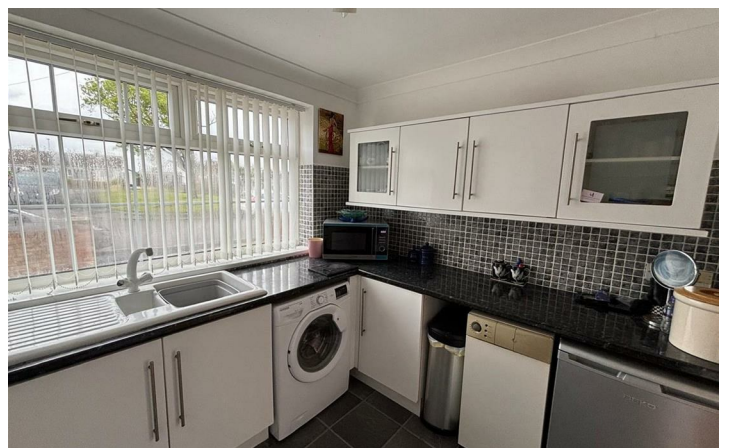
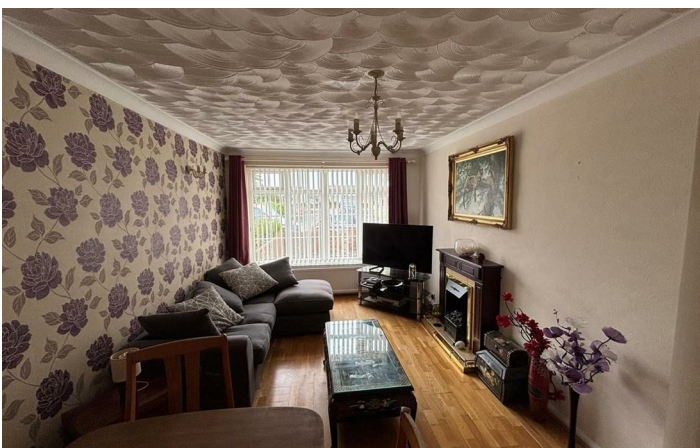
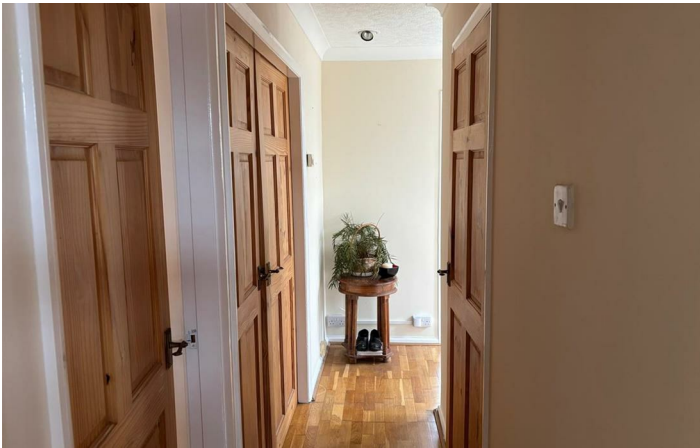
All measurements have been taken using a laser tape measure and therefore, may be subject to a small margin of error.

Disclaimer - These particulars are produced in good faith, are set out as a general guide only and do not constitute, nor constitute any part of an offer or a contract. None of the statements contained in these particulars as to this property are to be relied on as statements or representations of fact. Any intending purchaser should satisfy him/herself by inspection of the property or otherwise as to the correctness of each of the statements prior to making an offer. No person in the employment of HPS Estate Agents has any authority to make or give any representation or warranty whatsoever in relation to this property.

About HPS Estate Agents

HPS is a trusted and recognised Estate Agents in the local market, our sales team brings together industry expertise, genuine passion, and a forward-thinking approach to property. Whether you're buying, selling, or exploring something new, we deliver a level of service that's as supportive as it is results-driven. From stylish residential homes to thriving commercial spaces, we're with you from the first enquiry to the moment you step confidently into your new property. If you're ready for a smoother, smarter and more personalised experience, give us a call—your next move starts here.

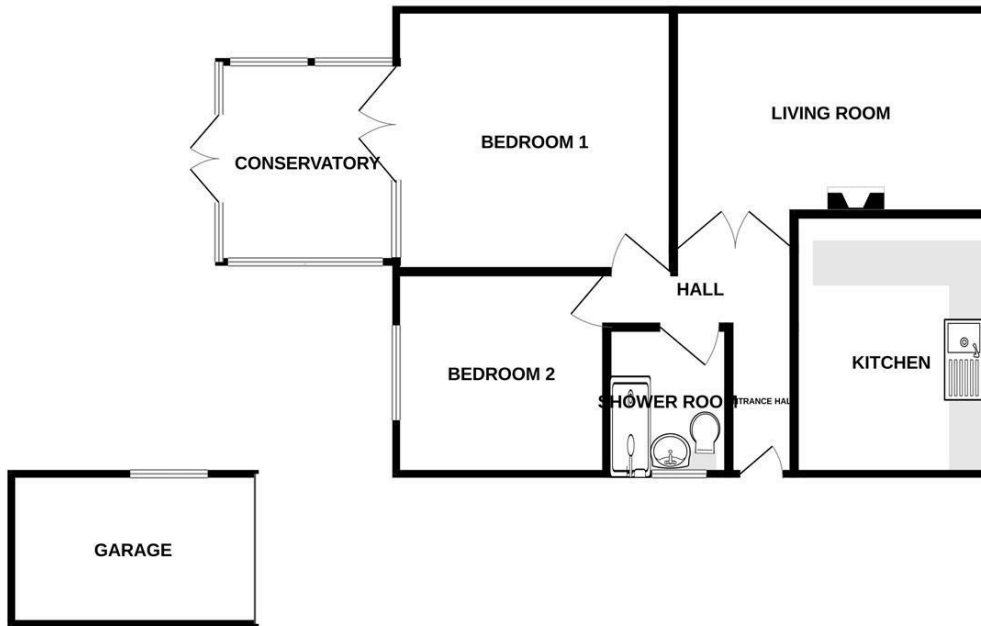
- True bungalow in a peaceful location
- Short drive to Hornsea and within driving distance to Beverley, Bridlington and Driffeld
- Welcoming village with a community village hall offering many activities
- Must be viewed to truly appreciate this delightful home
- Two good sized bedrooms
- Rear garden has views of open fields
- Drive and garage offering plenty of off street parking
- Close to the coast of East Yorkshie and the King Charles III coastal walking path
- Low maintenance gardens
- Village benefits from a shop and traditional village pub





Floor Plan

GROUND FLOOR
657 sq.ft. (61.0 sq.m.) approx.



TOTAL FLOOR AREA : 657 sq.ft. (61.0 sq.m.) approx.

Whilst every attempt has been made to ensure the accuracy of the floorplan contained here, measurements of doors, windows, rooms and any other items are approximate and no responsibility is taken for any error, omission or mis-statement. This plan is for illustrative purposes only and should be used as such by any prospective purchaser. The services, systems and appliances shown have not been tested and no guarantee as to their operability or efficiency can be given.
Made with Metropix ©2026

These particulars, whilst believed to be accurate are set out as a general outline only for guidance and do not constitute any part of an offer or contract. Intending purchasers should not rely on them as statements of representation of fact, but must satisfy themselves by inspection or otherwise as to their accuracy. No person in this firm's employment has the authority to make or give any representation or warranty in respect of the property.

Energy Efficiency Rating		Current	Potential
Very energy efficient - lower running costs			
(92 plus) A			
(81-91) B			
(69-80) C			
(55-68) D			
(39-54) E			
(21-38) F			
(1-20) G			
Not energy efficient - higher running costs			
England & Wales	EU Directive 2002/91/EC		

Environmental Impact (CO ₂) Rating		Current	Potential
Very environmentally friendly - lower CO ₂ emissions			
(92 plus) A			
(81-91) B			
(69-80) C			
(55-68) D			
(39-54) E			
(21-38) F			
(1-20) G			
Not environmentally friendly - higher CO ₂ emissions			
England & Wales	EU Directive 2002/91/EC		